

# XYZ COMPANY LTD.

Prepared For:  
JANE DOE

XYZ et al Drumheller  
100/01-02-003-04-W5/06

## **STATIC GRADIENT**

PAS-GRD

### Belly River Formation

312.50 – 315.50 mKB MD

308.20 – 313.60 mKB TVD

Test Date: November 25, 2005

Release Date: May 5, 2008

Job No.: 06.243

Prepared by:



## GENERAL INFORMATION

### Client Information:

Company: XYZ Company Ltd.

Contact: Jane Doe

Phone: (403) 123-4567 Fax: (403) 584-2154 e-mail: jane.doe@xyz.com

### Site Information:

Contact: John Doe

Phone: (403) 987-4067 Fax: e-mail:

### Well Information:

Name: XYZ et al Drumeheller

Operator: XYZ Company Ltd.

Location-Downhole: 100/01-02-003-04W5/06

Location-Surface: 01-36-050-28W4

### Test Information:

Company: Lone Wolf Solutions Ltd.

Representative: Dale Sands

Supervisor: Elaine Sands

Test Type: Reverse Static Gradient

Job Number: 06.243

Test Unit:

Start Date: 2005/11/25

Start Time: 17:46:05

End Date: 2005/11/25

End Time: 10:01:05

Report Date: 2005/11/29

Prepared By: Lone Wolf Solutions Ltd.

### Remarks:

Qualified By: Lone Wolf Solutions Ltd.

Middle ELLERSLIE perforated intervals: 1388.00 - 1391.00 and 1393.00 - 1396.00 mKB.

All pressures are reported in kPaa.

All depths are reported in mKB.

# STATIC GRADIENT - November 25, 2005

## XYZ Company Ltd. XYZ et al Drumheller

<b>UWI:</b>	100/01-02-003-04W5/06	<b>KB Elevation:</b>	Not available
<b>Field:</b>	Drumheller	<b>GL Elevation:</b>	Not available
<b>Formation:</b>	Belly River	<b>CF Elevation:</b>	Not available
<b>Status:</b>	02 - Gas	<b>Top of Production Interval:</b>	1388.00 mKB
<b>License:</b>	328142	<b>Btm of Production Interval:</b>	1396.00 mKB
<b>Well Type:</b>	Vertical	<b>Mid Point of Prod. Interval:</b>	1392.00 mKB
<b>Start of Test:</b>	November 25, 2005 09:55	<b>Initial Tubing Pressure:</b>	8893.00 kPa(a)
<b>Final Test Date and Time:</b>	November 25, 2005 10:01	<b>Initial Casing Pressure:</b>	8983.00 kPa(a)
<b>Shut-In Date and Time:</b>	October 30, 2005 12:01	<b>Shut-In Duration:</b>	621.8917 hr

	<b>Gauge 1</b>	<b>Gauge 2</b>
<b>Gauge Type:</b>	Electronic	Electronic
<b>Manufacturer:</b>	Panther/Panther	Panther/Panther
<b>Serial Number:</b>	2580	2581
<b>Pressure Range:</b>	0 - 20684.00 kPa	0 - 20684.00 kPa
<b>Resolution:</b>	0.00030 % FS	0.00030 % FS
<b>Accuracy:</b>	0.02400 % FS	0.02400 % FS
<b>Calibration Date:</b>	August 29, 2005	August 29, 2005
<b>Battery On Time:</b>	October 28, 2005 17:16	October 28, 2005 17:16
<b>Battery Off Time:</b>	November 25, 2005 11:09	November 25, 2005 11:09
<b>On Bottom Time:</b>	October 28, 2005 17:46	October 28, 2005 17:46
<b>Off Bottom Time:</b>	November 25, 2005 10:01	November 25, 2005 10:01
<b>Run Depth:</b>	1398.90 mKB	1398.40 mKB
<b>Pressure at Run Depth:</b>	10923.44 kPa(a)	10921.20 kPa(a)
<b>Pressure at MPP:</b>	10916.22 kPa	10914.51 kPa
<b>Representative Gradient:</b>	2.735 kPa/m	2.670 kPa/m
<b>Temperature at Run Depth:</b>	59.86 °C	60.54 °C
<b>Liquid Level:</b>	1396.82 mKB	1396.54 mKB

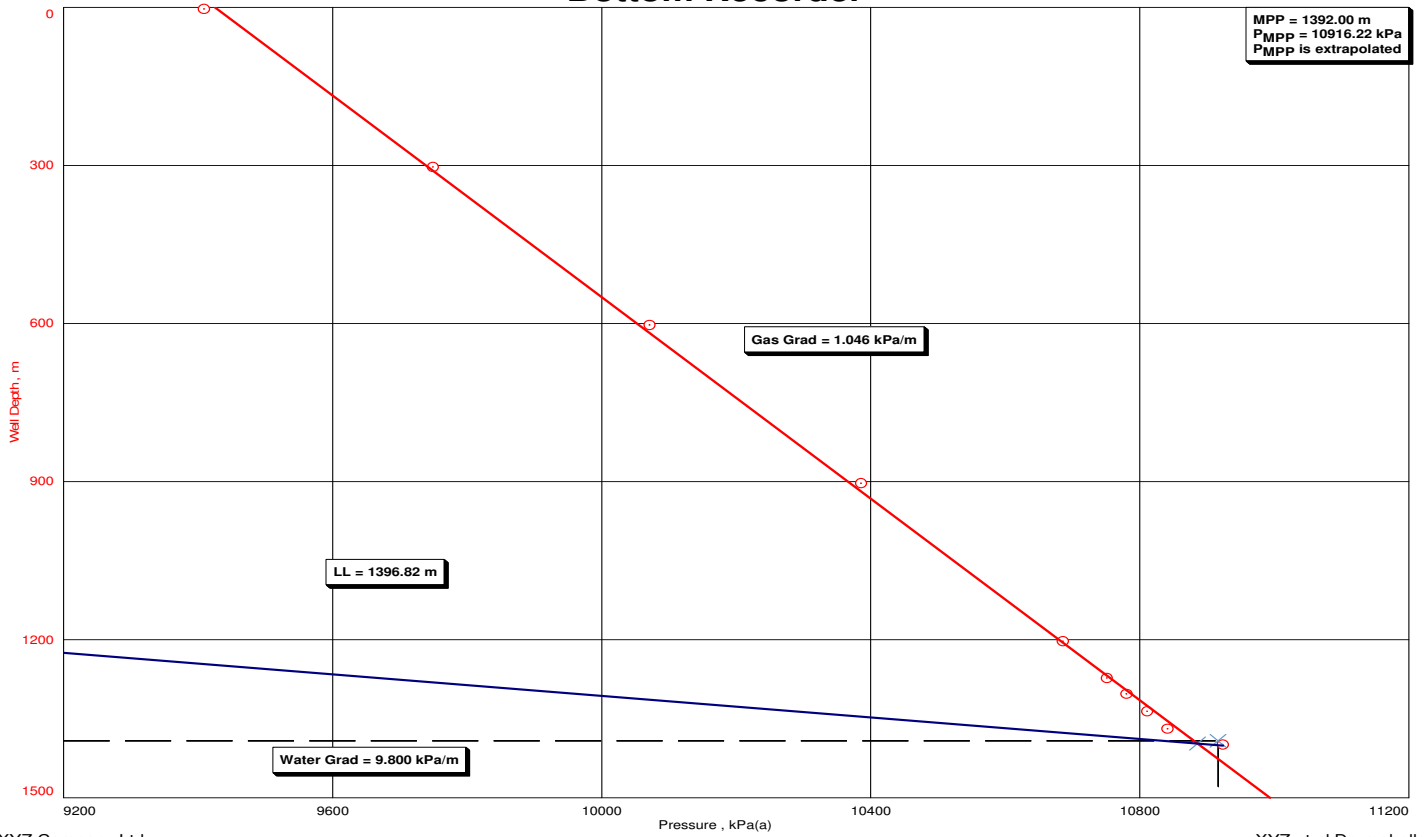
Bottom Recorder				
Depth mKB	Temp. °C	Pressure kPa(a)	Calc. Grad kPa/m	Temp. Grad °C/m
2.90	5.59	9409.07	1.134	0.037
302.90	16.72	9749.28	1.073	0.034
602.90	27.01	10071.32	1.048	0.042
902.90	39.52	10385.80	0.999	0.046
1202.90	53.39	10685.63	0.934	0.049
1272.90	56.79	10751.03	0.978	0.046
1302.90	58.18	10780.36	0.931	0.030
1335.90	59.18	10811.08	0.918	0.023
1368.90	59.94	10841.38	2.735	-0.003
1398.90	59.86	10923.44		

Top Recorder					Time
Depth mKB	Temp. °C	Pressure kPa(a)	Calc. Grad kPa/m	Temp. Grad °C/m	
2.40	5.72	9409.62	1.131	0.037	11:04:05
302.40	16.76	9748.99	1.072	0.034	10:54:35
602.40	27.05	10070.51	1.051	0.042	10:46:35
902.40	39.63	10385.74	0.999	0.046	10:38:35
1202.40	53.57	10685.46	0.934	0.047	10:30:35
1272.40	56.88	10750.87	0.980	0.046	10:24:35
1302.40	58.26	10780.25	0.927	0.033	10:18:35
1335.40	59.33	10810.86	0.916	0.021	10:13:05
1368.40	60.02	10841.09	2.670	0.017	10:07:05
1398.40	60.54	10921.20			09:55:05

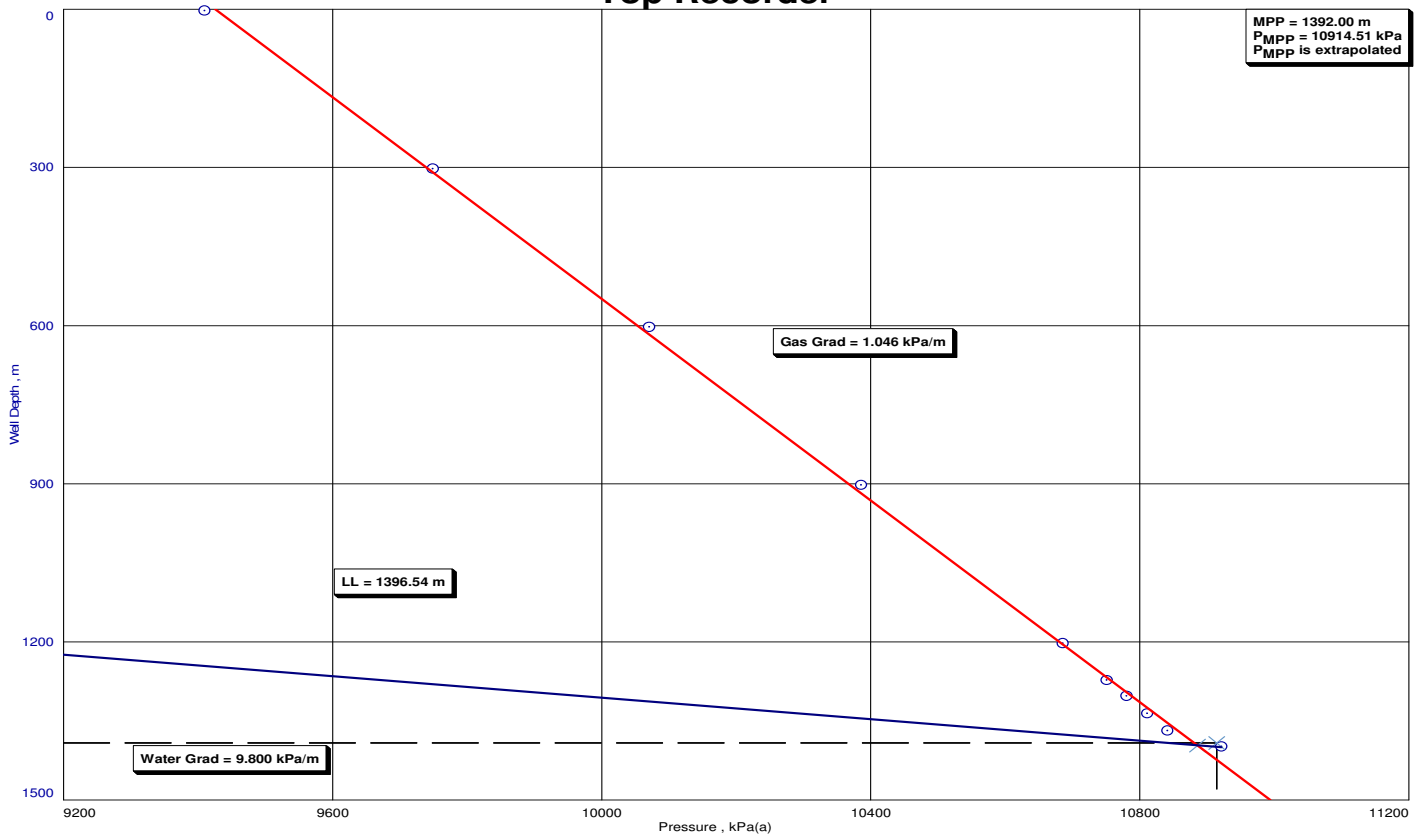
**Remarks:**

Middle ELLERSLIE perforated intervals: 1388.00 - 1391.00 and 1393.00 - 1396.00 mKB.  
 All pressures are reported in kPaa.  
 All depths are reported in mKB.

### Bottom Recorder



### Top Recorder



# Static Gradient

